

VEDA-BE Release Notes

KanORS Consulting Inc.

Version 4.5.7 [October 30, 2006]

- Debug: the “select all” button (one in the top row) on the scenario import/delete form did not work on some computers.
- Enhancement: the back-up/restore facility has been revamped. It used to save only the sets/tables definitions earlier. Now the entire folder is zipped and moved to a folder called \databases\ VBE_DB_BkUp\.
- Enhancement: using the tab key on the sets create/edit form now moves the focus in order.
- The status bar now displays the number of records short-listed for each table.
- Debug: VEDA used to complain about open forms to be closed while switching databases even if there were none. And closing the main VEDA window (or Alt+F4) did not work.

Version 4.5.6 [September 14, 2006]

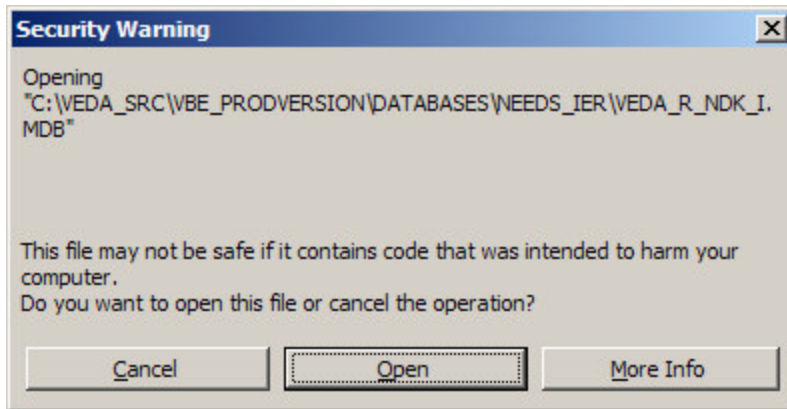
- Debug: new database creation threw an error if the scenario name contained “-“.
- RES 1.1.6: there was an error if region name was more than 3 char long.

Version 4.5.51 [May 10, 2006]

- Enhancement: Expression builder more robust with respect to names of dimensions.
- Enhancement: efficiency improvement in batch mode.

Version 4.5.50 [Apr 13, 2006]

- Enhancement: if new elements are found for a parent dimension, then the existing sets (in dependent dimensions) are copied automatically at the end of scenario import. For example, if there are process commodity sets for one region in a MARKAL/TIMES database, and you import a 10-region run, then the sets will be available in all regions.
 - Earlier, one had to “copy sets across parents” to achieve this.
- If some elements are missing from the VDE file, then they are shown on the dimension tabs with name=description. Earlier, these elements were not visible on the dimension tabs.
- The scenario import process has been made more efficient, and a lot more robust. But this needs the security level for Access Macros to be set to Low (in Microsoft Access, Tools – Macro – Security). If this is not done, then the dialogue below will appear once for each scenario that is imported, and the “open” button will need to be clicked.



Version 4.5.47 [Feb 3, 2005]

- Debug: there was an error in viewing exported tables when the table name included “spaces”.

Version 4.5.46 [Jan 10, 2005]

- New possibility under export options: not to include the date/time in file names. This applies to both batch mode, and individual tables, but only for Excel for now.

Version 4.5.45 [December 22, 2005]

- Automatic inclusion of GAMS_wrk folders in input files paths
- General efficiency improvement

Version 4.5.44 [December 5, 2005]

- Debug: The RES view was not showing commodity prices.

Version 4.5.43 [November 21, 2005]

- Debug: Sets with “.” in the description were dropped from table definition while modifying tables, in some cases. Note that set descriptions should not have “~”.
- DeBug: going down the list of tables in batch mode threw an error if one went too fast.

Version 4.5.42 [November 16, 2005]

- Ad-hoc release

Version 4.5.41 [November 2, 2005]

- Enhancement: efficiency improvement in the last step of import process.
- DeBug: AutoRefresh of sets did not work for sets where exclude involved sets.

Version 4.5.40 [August 31, 2005]

- Enhancement: Checks for duplicate elements among the sets selected for any particular table.

Known bugs and workarounds

- Bug: Unchecking individual elements does not work while creating sets.
 - Workaround: Exclude these elements by using the exclude part of set rule. In the worst case, you can list them in the “name not like” field.